

New Mexico High School Graduation

Joslyn Overby, NMPED
Assistant Director of Assessment

Joslyn.overby@state.nm.us
505-827-6570

Graduation Requirements



1. Standard Option
 - Accommodations
2. Alternate Options
3. Documentation

Standard Graduation Option Requirements

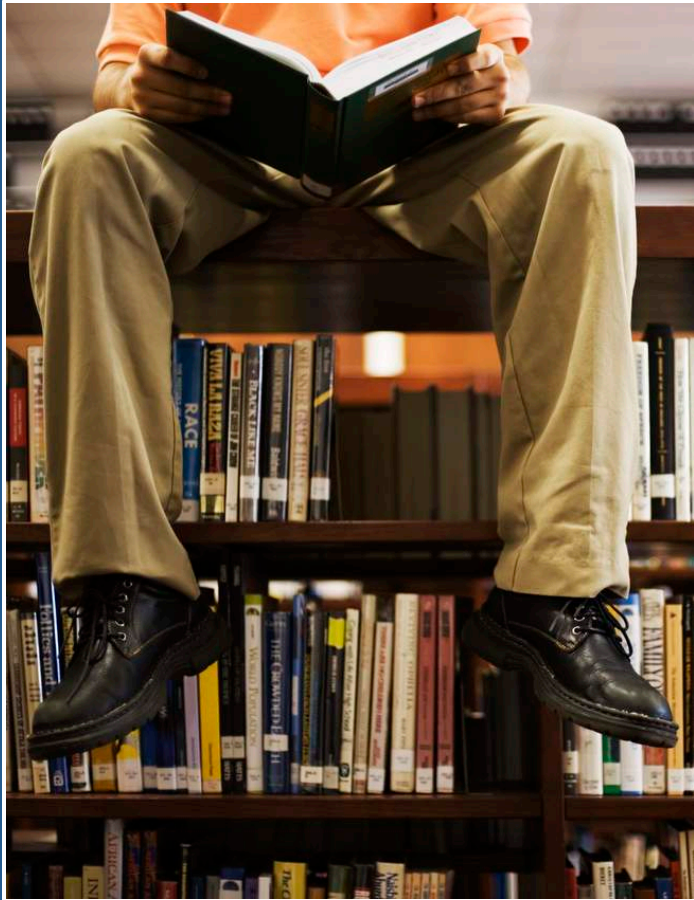
1. Course Requirements
2. Assessment Requirements



Standard Option Course Requirements

- 4 credits ELA
- 4 credits math including Algebra II or equivalent
- 3.5 credits social studies including US History and Geography, World History and Geography, Government and Economics, and 0.5 credit of NM History
- 3 credits science, 2 of which must be lab sciences
- 1 credit physical education
- 1 career cluster course, workplace readiness or non-English language
- 7.5 elective credits
- 1 course of health (starting with 2017 cohort) in HS or MS

Standard Option Course Requirements



At least one course must be Honors (H), Advanced Placement (AP), Dual Credit (DC), or Distance Learning (DL).

Timing of Courses

- High School level courses may be taken by students in middle school.
- Teachers must be highly qualified with appropriate certification.
- Students may receive High School credit.

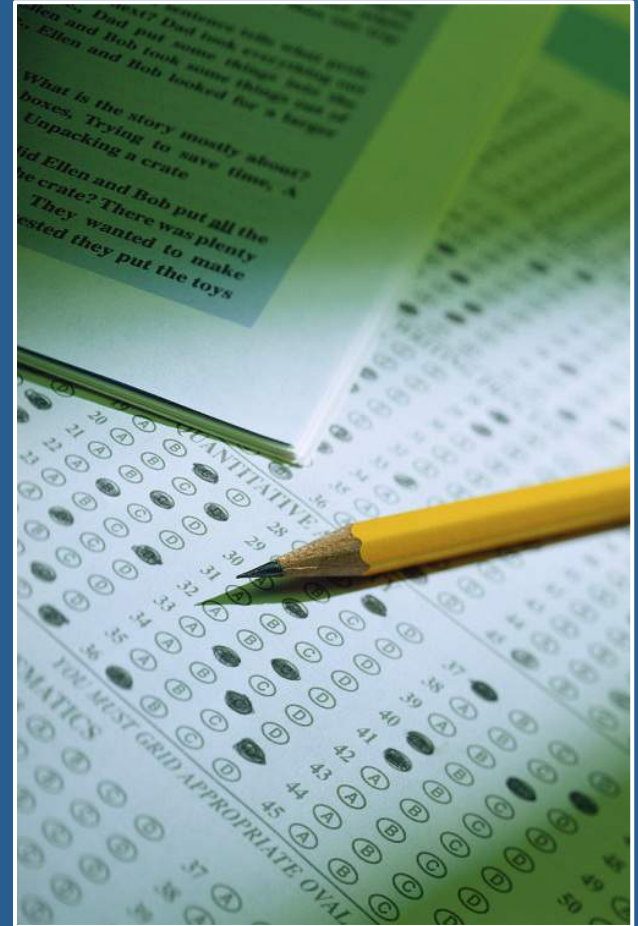


Assessment Requirements

Based on Statute

NMSA 22-13-1-1

Passed in 1986; updated
several times





NMSA 22-13-1-1-M

Beginning with the 2010–2011 school year, a student shall not receive a New Mexico diploma of excellence if the student has not demonstrated competence in the subject areas of mathematics, reading and language arts, writing, social studies and science, including a section on the constitution of the United States and the constitution of New Mexico, based on a standards-based assessment or assessments or a portfolio of standards-based indicators established by the department by rule.

Senate Bill 122

- Signed by Governor Martinez 2014
 - PE requirement may be met by PE course, marching band, athletic sport, or JROTC
 - SB 122 also states that once a cohort begins their freshman year, their graduation **requirements** cannot be changed.
- Please note that there is a difference between *requirements* and *options for students to meet those requirements*

Standard Option Assessment Requirements for HS Graduation **2016**

Primary Demonstration of Competency

Reading: Pass SBA Reading in Grade 10 (2014) with 1137 or 2273 composite (reading + math), or pass PARCC ELA Grade 11 (2015) with a performance level of 3

Writing: Pass PARCC ELA Grade 11 (2015) with a performance level of 3¹ or pass one writing EoC

Math: Pass SBA Math in Grade 10 (2014) with 1137 or 2273 composite (reading + math), or PARCC Algebra II *OR* Geometry (2015) with a performance level of 3¹

Science: Pass SBA with 1138

Social Studies: Pass one social studies EoC

In fall 2015, PED will establish specific PARCC scale scores to meet competency requirements.

Standard Option Assessment Requirements for HS Graduation **2016**

Assessment Attempt Requirements

- Students must attempt the following before implementing the ADC:
 - **Reading and Math**: State accountability assessment (SBA and/or PARCC) 3 times
 - **Writing**: State accountability assessment (PARCC) 1 time
 - **Science**: State accountability assessment (SBA Science) 2 times before implementing the ADC
 - **Social Studies**: One New Mexico EoC 1 time before implementing the ADC
- If students do not meet the assessment attempt requirements listed above, they may use the ADC with an approved ADC Implementation Application.
- Students on the standard graduation option may retest PARCC to meet requirements listed above. 2016 seniors took the SBA as sophomores in spring 2014, PARCC as juniors in spring 2015, and optional PARCC retests as seniors in fall 2015.

Standard Option Assessment Requirements for HS Graduation **2016**

Alternate Demonstration of Competency

- If students do not pass the primary demonstration of competency for graduation, the ADC includes EoCs, CCR indicators, and local ADCs according to NMAC 6.19.7.10.
 - ACT
 - PLAN
 - PSAT
 - SAT
 - Accuplacer
 - COMPASS
 - IB Program
 - AP
 - EoC

*See ADC Manual for options and
CCR cut scores.*

Transfer Students (to PED schools)

- Transfers in final year of HS must demonstrate competency in Reading, Writing, and Math only.
- All other transfers are held to same assessment requirements as NM students.
- Students who passed an exit exam in a different state may use passing scores for all passed subjects.

Complete “Graduation Waiver” and submit to PED (also for course waivers).





Questions about
Standard Option
graduation
requirements?

Alternate Graduation Options



1) Standard

2) Career Readiness

3) Ability

NMAC 6.29.1.9.J

Graduation Requirements by Option

Option	Course Requirements	Assessment Requirements
Standard	Meet required credit # through pre-determined courses (with some choice)	Meet established passing scores on required tests (PARCC/SBA/EoCs) with or without accommodations.
Career	Meet required credit # through mix of standard and alternate courses determined by IEP team. Minimum 4 units of career development courses/experiences.	Meet individualized passing scores on required tests (PARCC/SBA/EoCs) determined by IEP team.
Ability	Determined by IEP team to reflect student abilities.	Meet individualized passing scores on all subjects of the Alternate Assessment (NCSC/ NMAPA)

Standards by Option

Option	Standards
Standard	<ul style="list-style-type: none">• ELA, Math: CCSS• Science, Social Studies: NMSS
Career	<ul style="list-style-type: none">• ELA, Math: CCSS• Science, Social Studies: NMSS• <i>Employability and Career Development Standards (Grade 7-HS)</i>
Ability	<ul style="list-style-type: none">• ELA, Math: CCSS/CCEGBE• Science, Social Studies: NMEGBE

New Mexico Diploma of Excellence

New Mexico diploma is the same regardless of the graduation option.



Transcript must indicate alternate pathway and include results of state assessments in each area.

Career Graduation Option

- Goal: To produce students with the ability to gain meaningful employment.
- Alternate program of study that develops students' career interests and workplace readiness.



Career Graduation Option

Should a student be on the Career Option?

- 1) Document rationale (on IEP) for rejecting standard pathway.
- 2) Base decisions on needs of student (not credit number or test scores).
- 3) Give parent/guardian information and obtain agreement.

Career Readiness Standards with Benchmarks

Employability and Career Development Standards, Grades 7–HS

- PED SEB's Technical Assistance Manual for Graduation Options for Students with Disabilities
- NMAC Subsection 2.29.3.8



Employability and Career Development Standards: Strands

There are Content Standards and Benchmarks beneath each strand.

Strand 1: Academic Foundations

Strand 2: Communications

Strand 3: Problem Solving and Critical Thinking

Strand 4: Information Technology Applications

Strand 5: Systems

Employability and Career Development Standards: Strands

There are Content Standards and Benchmarks beneath each strand.

Strand 6: Safety, Health and Environmental Management

Strand 7: Leadership and Team Work

Strand 8: Ethics & Legal Responsibilities

Strand 9: Employability and Career Development

Strand 10: Technical Skills

Career Readiness Option

A student may graduate on the Career Pathway if s/he:

- 1) earns the district's required number of credits to include a minimum of four units of career development courses,
- 2) participates in the Statewide College and Workplace Readiness Assessment System,
- 3) achieves competency in all areas of the Employability and Career Development Standards with Benchmarks and Performance Standards, and
- 4) achieves a level of proficiency determined by the student's IEP team on the current graduation exit exams.

Career Option Assessment Requirements for HS Graduation 2016

Primary Demonstration of Competency

Reading: Pass SBA Reading in Grade 10 (2014) with 1137 or 2273 composite (reading + math), or pass PARCC ELA Grade 11 (2015) with a performance level of 3. Career option students may meet individualized passing scores.

Writing: Pass PARCC ELA Grade 11 (2015) with a performance level of 3¹ or pass one writing EoC. Career option students may meet individualized passing scores.

Math: Pass SBA Math in Grade 10 (2014) with 1137 or 2273 composite (reading + math), or PARCC Algebra II OR Geometry (2015) with a performance level of 3¹. Career option students may meet individualized passing scores on these assessments OR the Algebra I PARCC test.

Science: Pass SBA with 1138. Career option students may meet individualized passing scores.

Social Studies: Pass one social studies EoC. Career option students may meet individualized passing scores.

Ability Graduation Option

- Goal: To produce students with Basic life skills.



- For students with severe cognitive impairments that affect the student in multiple settings (school, home, community).

Extended Grade Band Expectations

Based on CCSS and NMSS.

Meaningful for Ability Option students.

<http://ped.state.nm.us/AssessmentAccountability/AssessmentEvaluation/NMAPA/index.html>



Ability Graduation Option

A student's program of study must:

- focus on functional life and community skills,
- Include extended grade-level academic content and skills
- work towards goals, objectives and benchmarks indicated in the EGBEs and identified by the IEP team,
- include transition services.



Ability Graduation Option

A student may graduate on the Ability Option if s/he:

- 1) successfully completes the program of study set forth by the IEP team,
- 2) has documentation indicating that the student has progressed in the necessary skills identified by the IEP team (independence, communication, work experience, etc.), and
- 3) achieves a level of proficiency determined by the student's IEP team on the alternate graduation exit exams (NMAPA/NCSC).

Questions about the Career or Ability Options?



Documentation for Graduation

All Students:



- 1) Course credits completed
- 2) Assessment scores and pass/fail status

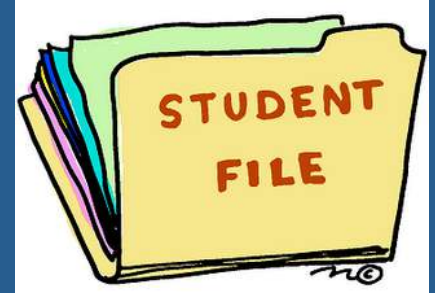
Documentation for Graduation

Standard Pathway:

- Next Step Plan
- 8th–12th Grades
- Includes:
 - Plan for coursework based on post-graduation plans.
 - 12th grade Final Next Step Plan includes plans for college, trade program, internship, military service, or employment.



Documentation for Graduation



Standard Pathway:

- IEP can replace Next Step Plan for SWD.
- Same requirements:
 - Plan for coursework based on post-graduation plans.
 - 12th grade IEP includes plans for college, trade program, internship, military service, or employment.

Important Graduation Information in IEP

For All Students with IEPs:

- Documentation of Exceptionalities
- Annual IEP Meeting Documents
- Classroom Accommodations
- Assessment Accommodations
- Coursework and Post-Secondary Plans

Important Graduation Information in IEP

Additional Documentation For Students On The Career Readiness Graduation Option:

- Rationale for placement on Career Option
- Program of study with career cluster
- Plan to achieve competency (and documentation of success) in all Career Readiness Standards and Benchmarks
- Results of assessments and IEP-team established individualized passing scores
- Transition plan

Important Graduation Information in IEP

Additional Documentation For Students On The Ability Option:

Rationale for placement on Ability Option

- Course sequence
- Results of assessments and IEP-team established individualized passing scores
- Transition plan

Guidelines for **Setting Passing Scores** on Graduation Assessments for Career and Ability Option Students NMAC 6.29.1.9.J.13.g

1. Review student success in instruction and on assessments



- Progress in classroom
- Results from interim assessments
- Scores on first attempt of the Graduation Assessment

Guidelines for **Setting Passing Scores** on Graduation Assessments for Career and Ability Option Students

2. Identify the subject area(s) in which the student performed below the established cut score.



- The student is reported to the state as “not proficient” in this area.

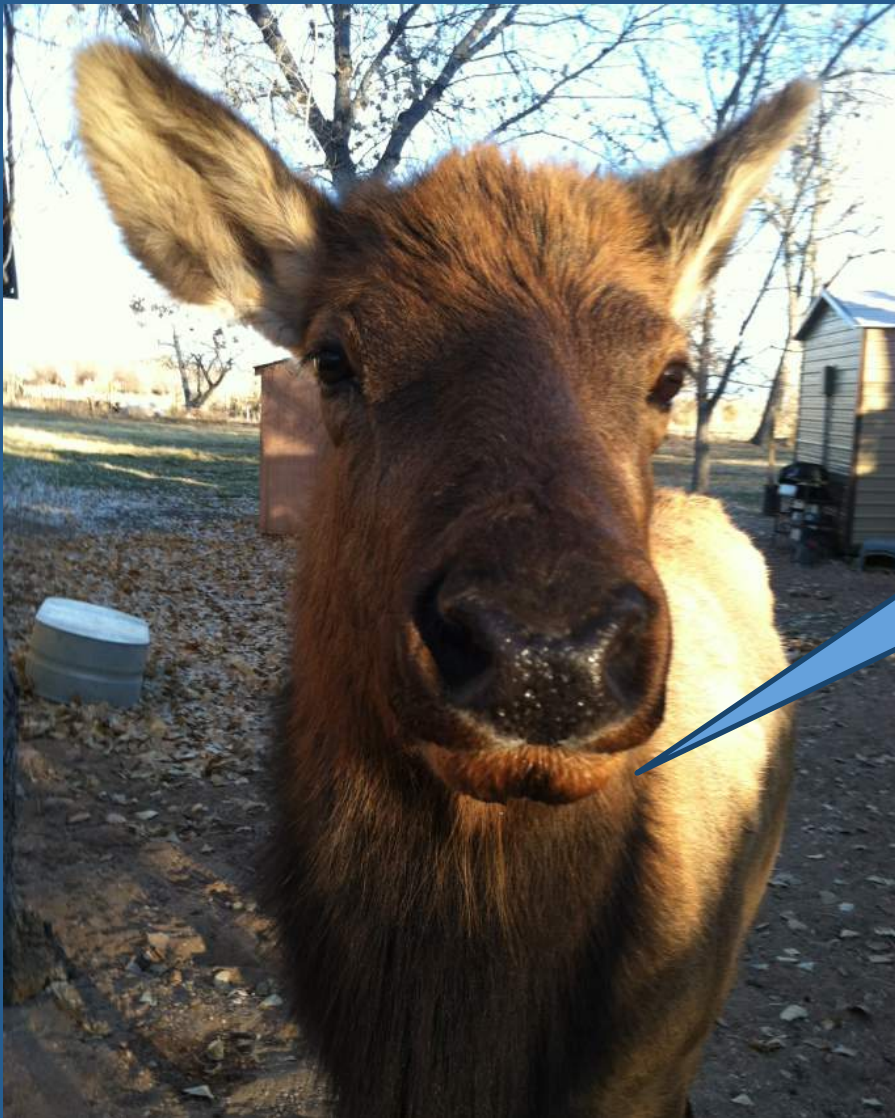
Guidelines for **Setting Passing Scores** on Graduation Assessments for Career and Ability Option Students

3. Using information about the student's ability, potential, and progress, determine an attainable target score for each subject on the assessment.
 - The target scores must be higher than the scores achieved on the first attempt, to promote progress.

Guidelines for **Setting Passing Scores** on Graduation Assessments for Career and Ability Option Students

The IEP Team may establish new passing scores after each assessment attempt, if necessary.





Questions about
Documentation?