

The left side of the slide features a decorative graphic consisting of several vertical lines of varying thickness and shades of pink, ranging from light to dark. To the right of these lines are five solid pink circles of different sizes, arranged in a cluster that tapers towards the right.

# CONNECTIONS

**To teach is to learn  
twice.**

Joseph Jourbert

# Classroom Instruction Must Be:

➤ *Efficient*

➤ *Effective*



Rigor

Relevance

Relationships





Relationships



Relevance



Rigor



# RELATIONSHIPS

- Facilitates learning
- Encourages growth and respect



*“STUDENTS TEND TO  
LISTEN MORE WITH THEIR  
HEARTS THAN WITH  
THEIR HEADS.”*

*DEVELOPING A LEARNING CLASSROOM*

*NIC COOPER AND BETTY K. GARNER*



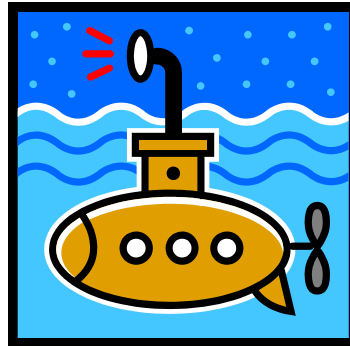
# Relevance

- Where learning is clearly the goal.
- What are you teaching?
- How are you presenting it?



# RIGOR

- Achieve depth and breadth of learning.





## ○ ACTIVITY

Think about the teacher that made the most positive impression with you.

How did **RELATIONSHIPS** **RELEVANCE**  
and **RIGOR** contribute to the  
positive impression with that teacher?

- Why are the 3 r's important?
- Discuss with an elbow partner.




Relationships

Relevance

Rigor

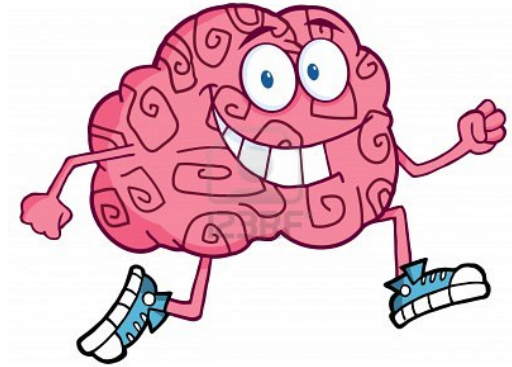


## ACTIVITY:

- Reflection
- Think of a classroom you have visited recently and document your observation for each of the 3 R's –  

  - Relationships
  - Relevance
  - Rigor
- Where is support needed for the 3 R's to occur?
- How will you coach your teacher?
- Think Pair-Share



# Growth mindsets



***“Growth Mindset”*** is grounded in a belief that growth is ongoing and that more effort will bring improved intelligence and performance.

Carol Dweck (2006)



# Fix Mindsets

Is grounded in a belief that “we are what we are,” and it isn’t likely to change.



## ACTIVITY

How you will go about promoting the growth mind set with the teachers you are working with?



“*Growth Mindset*” is grounded in a belief that growth is ongoing and that more effort will bring improved intelligence and performance.

(2006)

Carol Dweck



# REFLECTION



- What processes can you develop with your teachers in establishing . . . . .

RELATIONSHIPS

RELEVANCE

RIGOR

in their classroom?



*“Consistency is very important. That means we need to consistently do the right thing for each student, not the same thing for all students.”*

Nic Cooper

